



Il contributo di un Gruppo industriale alle sfide della sostenibilità

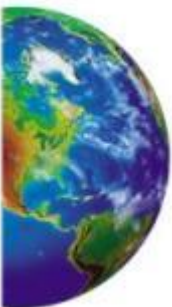
M.Cavanna
Finmeccanica GS
SVP Programmi internazionali, Energia e Logistica dei trasporti

Genova, 10 novembre 2011



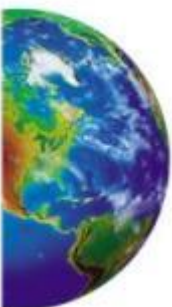
***“D’una città non godi le 7 o 77 meraviglie,
ma la risposta che dà a una tua domanda”***

(Italo Calvino, Le città invisibili)

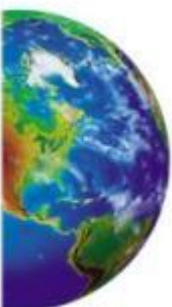


Città = “Sistema di sistemi”

Problematiche interconnesse (discipline e generazioni)



Come può il settore tecnologico contribuire alle sfide della sostenibilità nei grandi centri urbani?

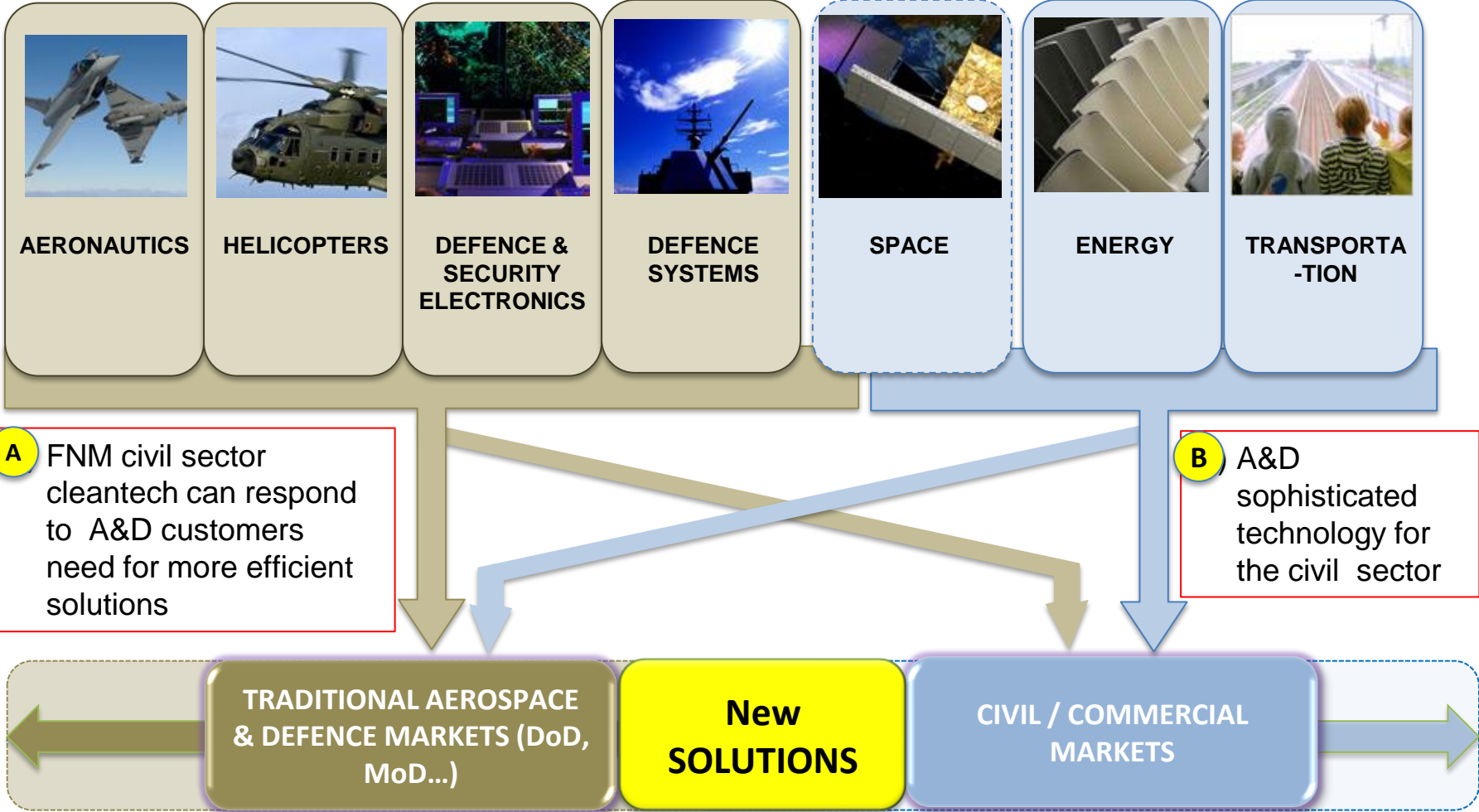


Approccio cross-settoriale

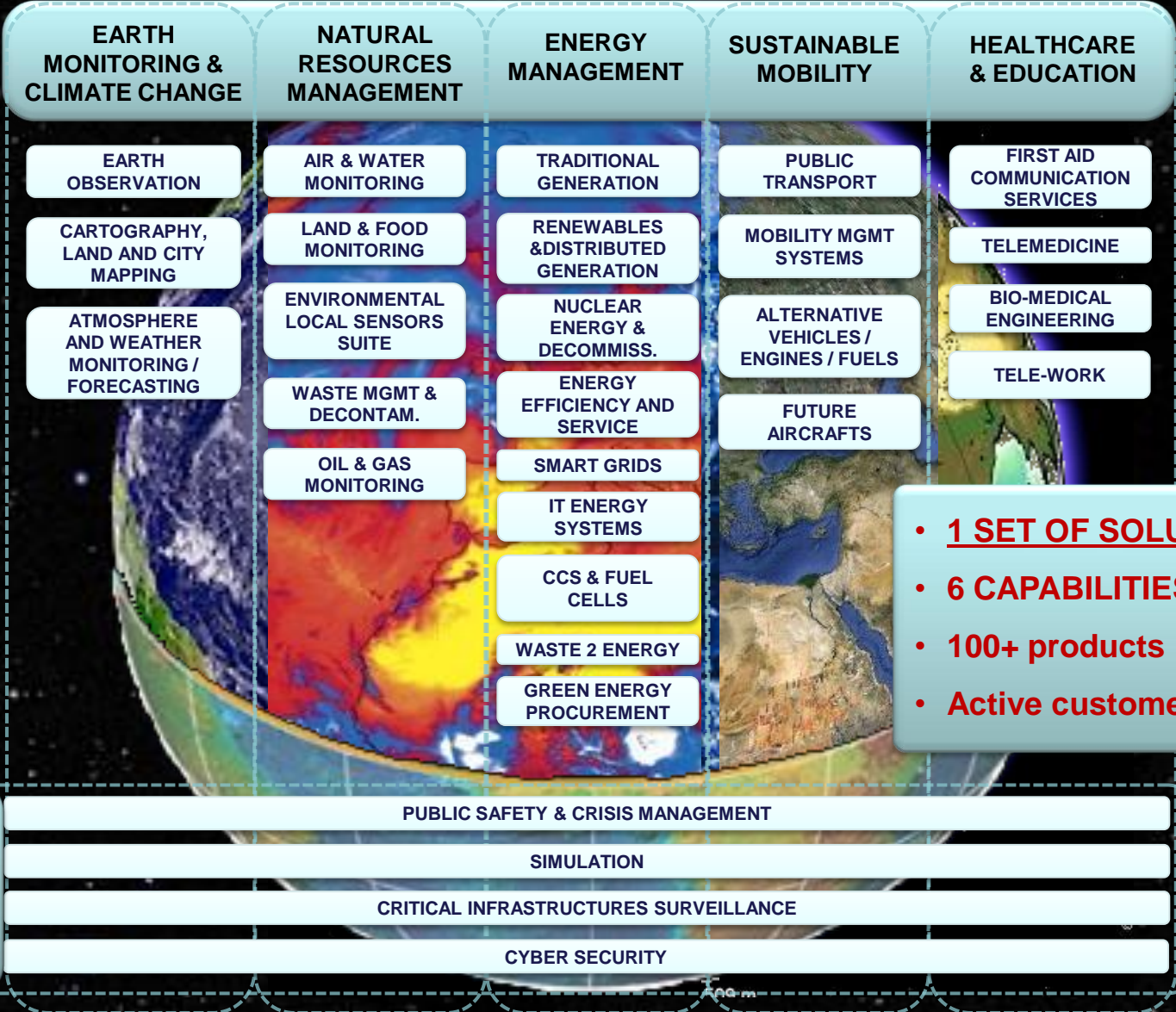
Soluzioni innovative e complesse

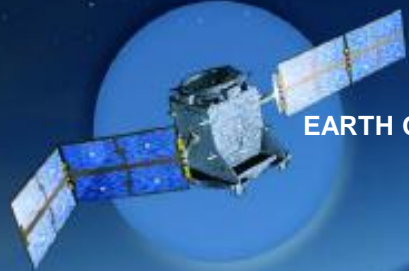
Impegno e collaborazione tra diversi attori

Dual use & technology cross-over



FINMECCANICA's PLANET INSPIRED solutions





EARTH OBSERVATION



SURVEILLANCE



GREEN ROTORCRAFTS

GREEN PLATFORM AIRCRAFTS

WEATHER RADARS
WEATHER FORECASTING



WIND GENERATION ELECTRONICS

ECOSYSTEMS VULNERABILITY ASSESSMENT

FUEL CELLS



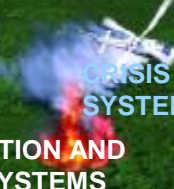
AIR & WATER QUALITY & TEMPERATURE MONITORING



ICT FOR ENERGY MARKETS



CRISIS MANAGEMENT SYSTEMS



FIRE DETECTION AND CONTROL SYSTEMS

NUCLEAR ENERGY



MICRO CO-GENERATION

TRADITIONAL POWER ST.

CROP MONITORING, BIOMASS USE

GEO THERMAL

SIGNALLING SYSTEMS



ENERGY EFFICIENCY SERVICES

CIVIL PROTECTION SYSTEMS



ENVIRONMENTAL CONTROL UNITS



TELEMEDICINE

INFO MOBILITY



LIGHT MASS TRANSIT VEHICLES

GAS-OIL EXPLORATION



VESSEL TRAFFIC MANAGEMENT

COMMAND AND CONTROL

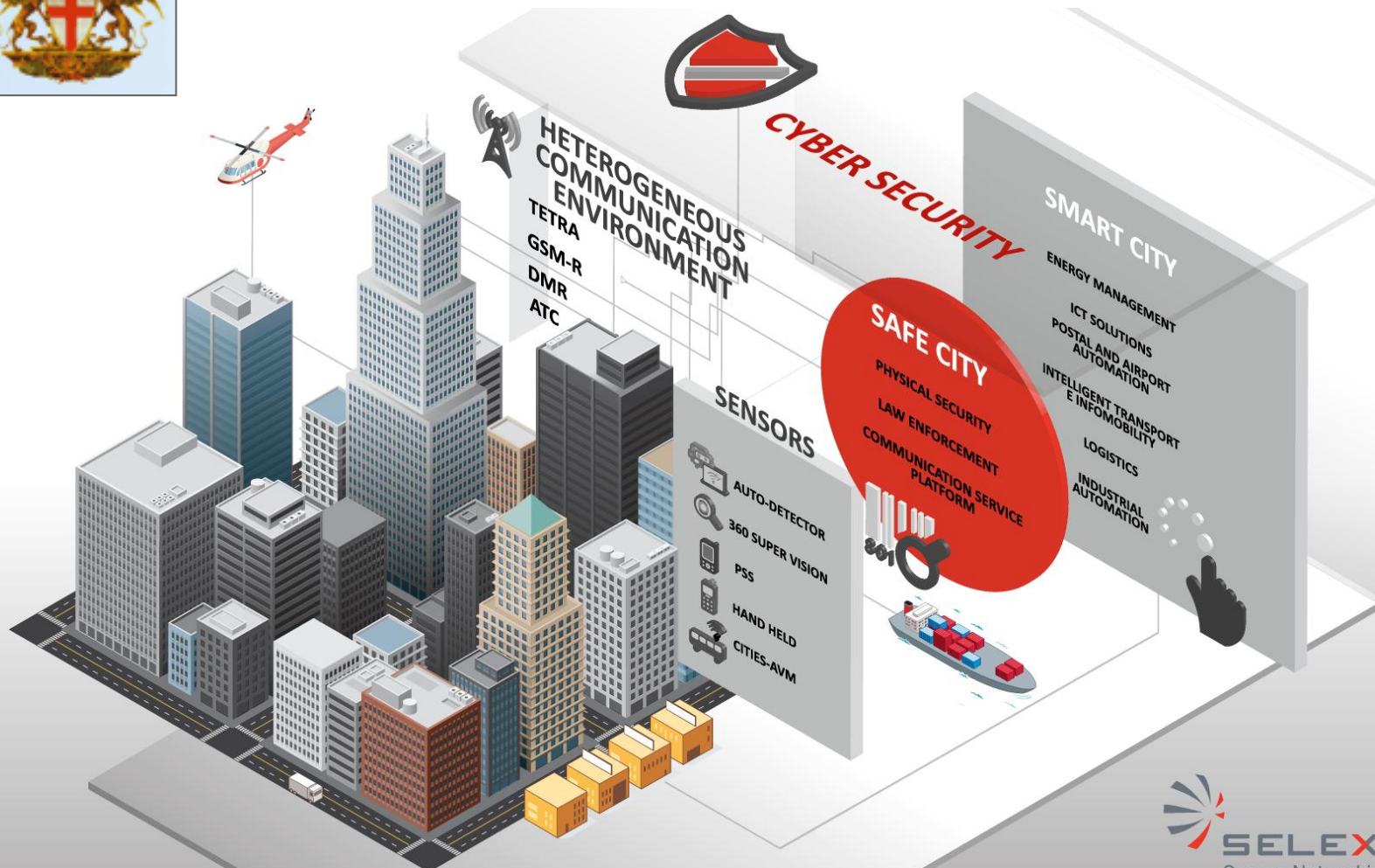


NETWORK CENTRIC TECHNOLOGIES

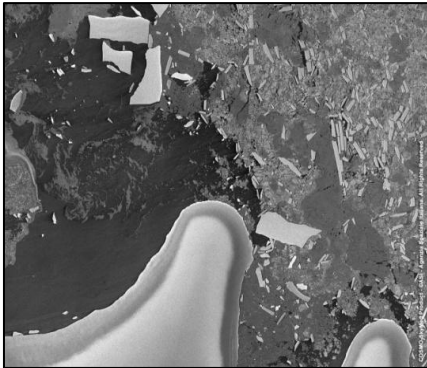
DATA FUSION



Protocollo di intesa (efficienza energetica uffici, Sicurezza area Maddalena)



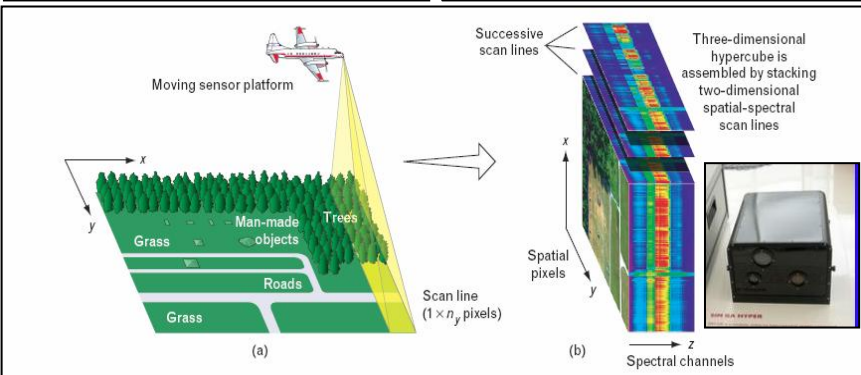
SATELLITE



LOCAL



HYPERSPECTRAL



THE CHALLENGES

- INCREASE AWARENESS ON:
 - EARTH MORPHOLOGY EVOLUTION
 - ATMOSPHERE & CLIMATE CHANGE DYNAMICS
- INFORMED DECISIONS (DATA ANALYSIS & SIMULATION)

THE SOLUTIONS

- Mgmt of COSMO SKY MED satellite const., with related VAS
- WEATHER AND SAR RADARS, HYPERSPECTRAL
- LAND & CITY MAPPING integration of multi-source data
- COASTAL EROSION
- OIL SPILLS
- DESERTIFICATION TRENDS
- ICE AREAS

MAIN PROJECTS

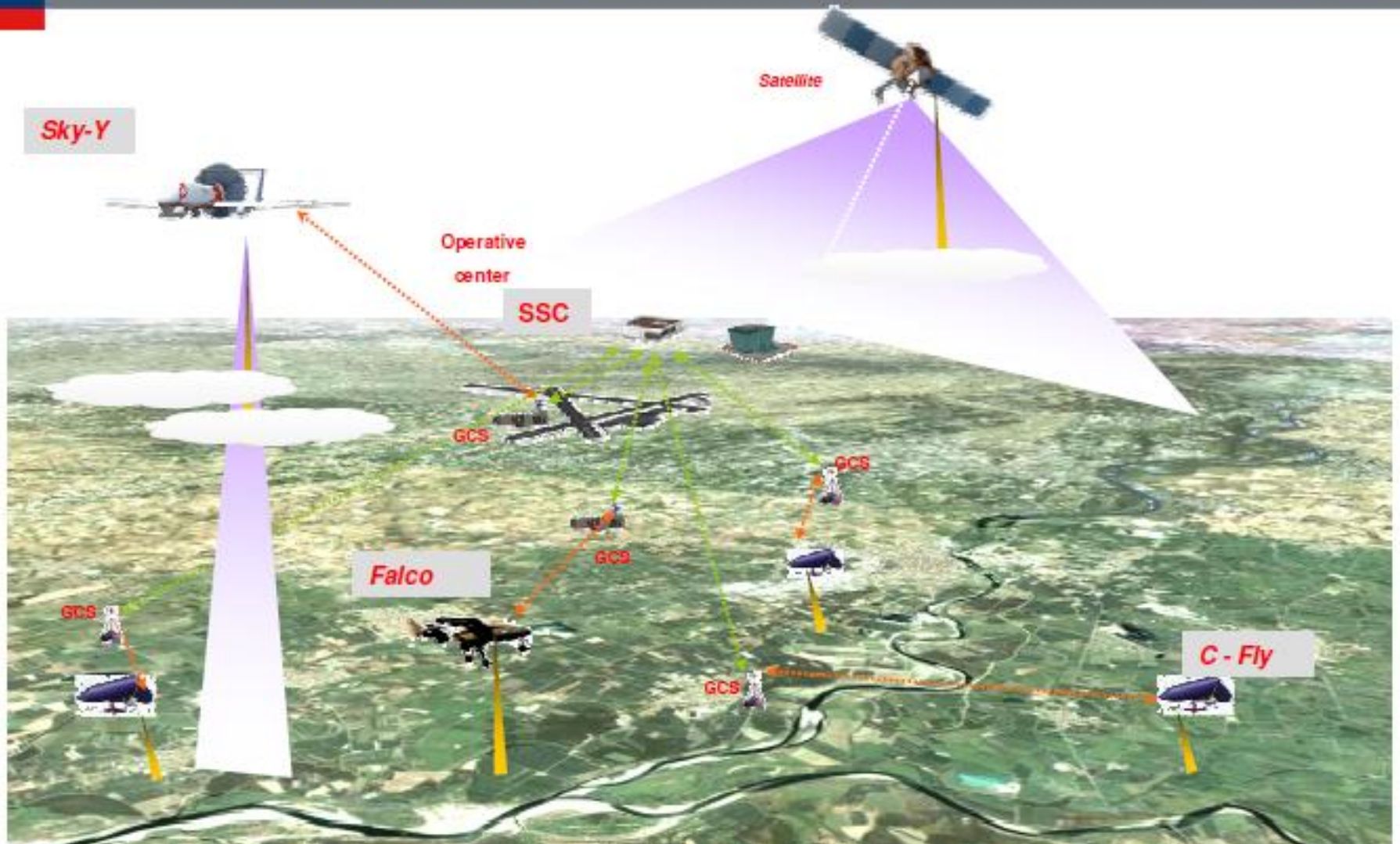
- GMES EUROPEAN PROGRAM
- ESA
- ITALIAN CIVIL PROTECTION
- OTHER CONFIDENTIAL CUSTOMERS



Unmanned Aircrafts



SMAT: Operational View



ENVIRONMENTAL SECURITY & RESPONSE

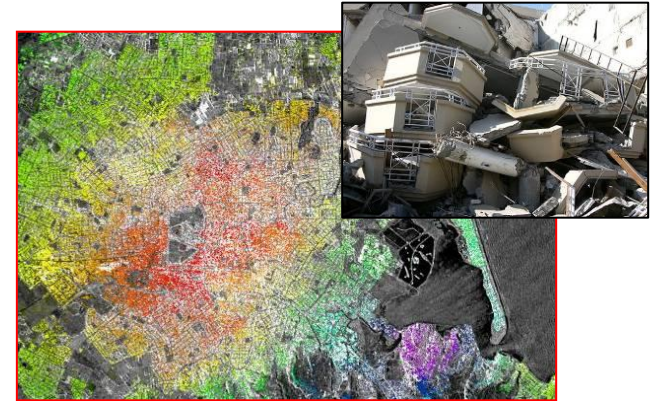
Cosmo Sky Med through Telespazio imaging VAS



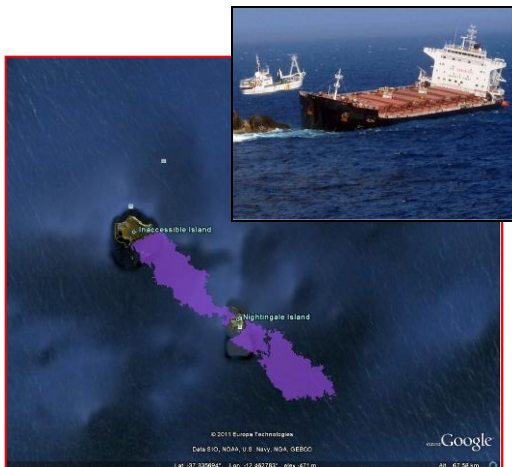
**Flood Mapping
Veneto, 2010**



**Post earthquake
trafficability analysis
Haiti, 2010**



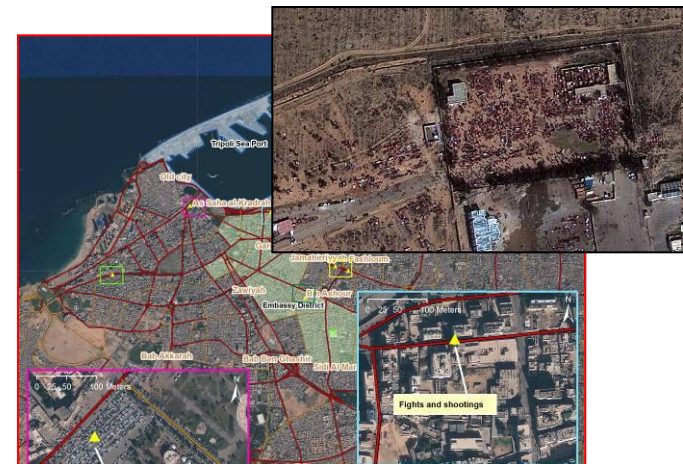
**Earthquake displacement map
New Zealand, 2011**



**Oil spill detection,
Tristan da Cunha, 2011**

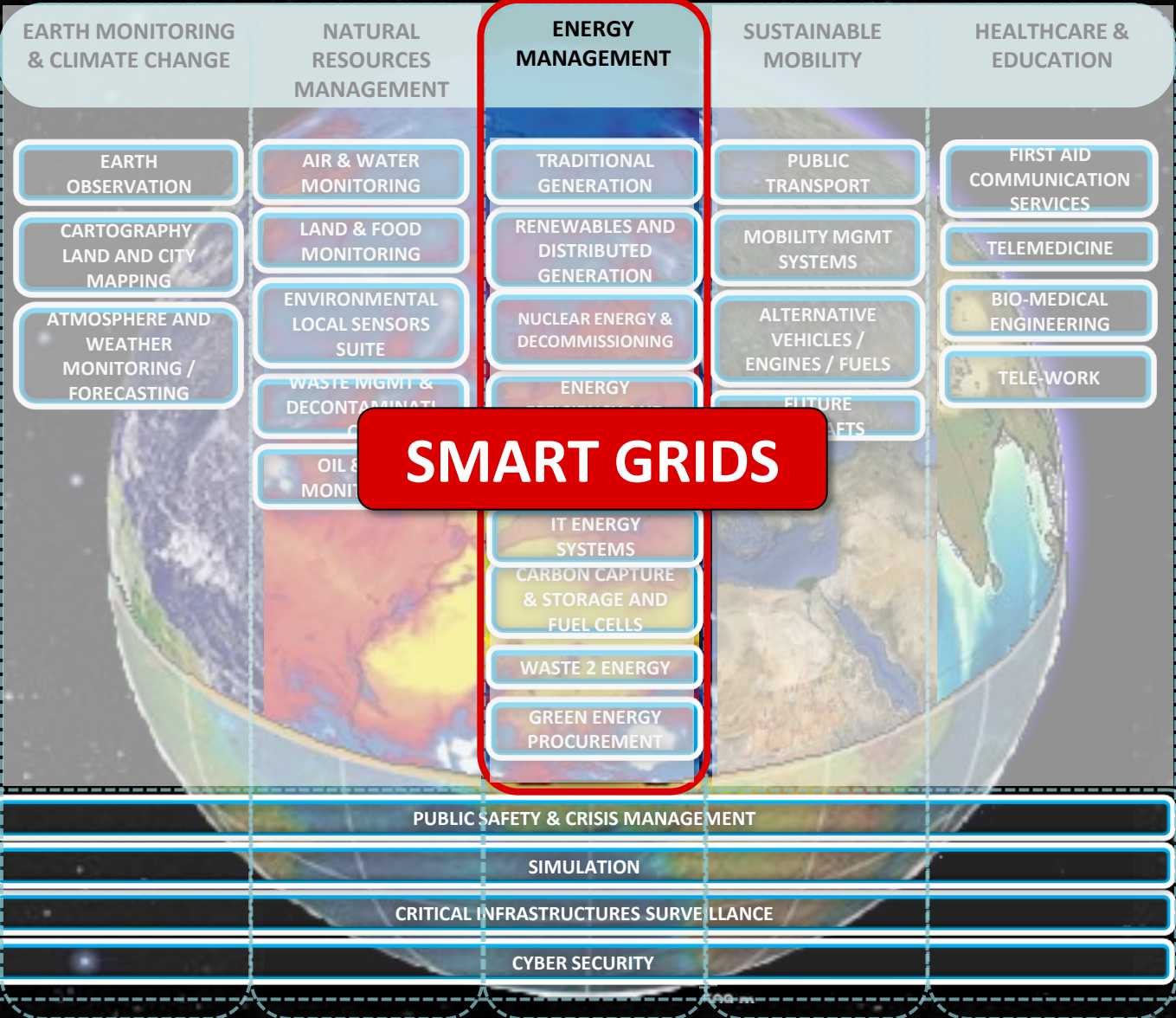


**Ship detection – pirates
Somewhere, 2011**



**Civil unrest – evacuation plans
and border surveillance
Libya, 2011**

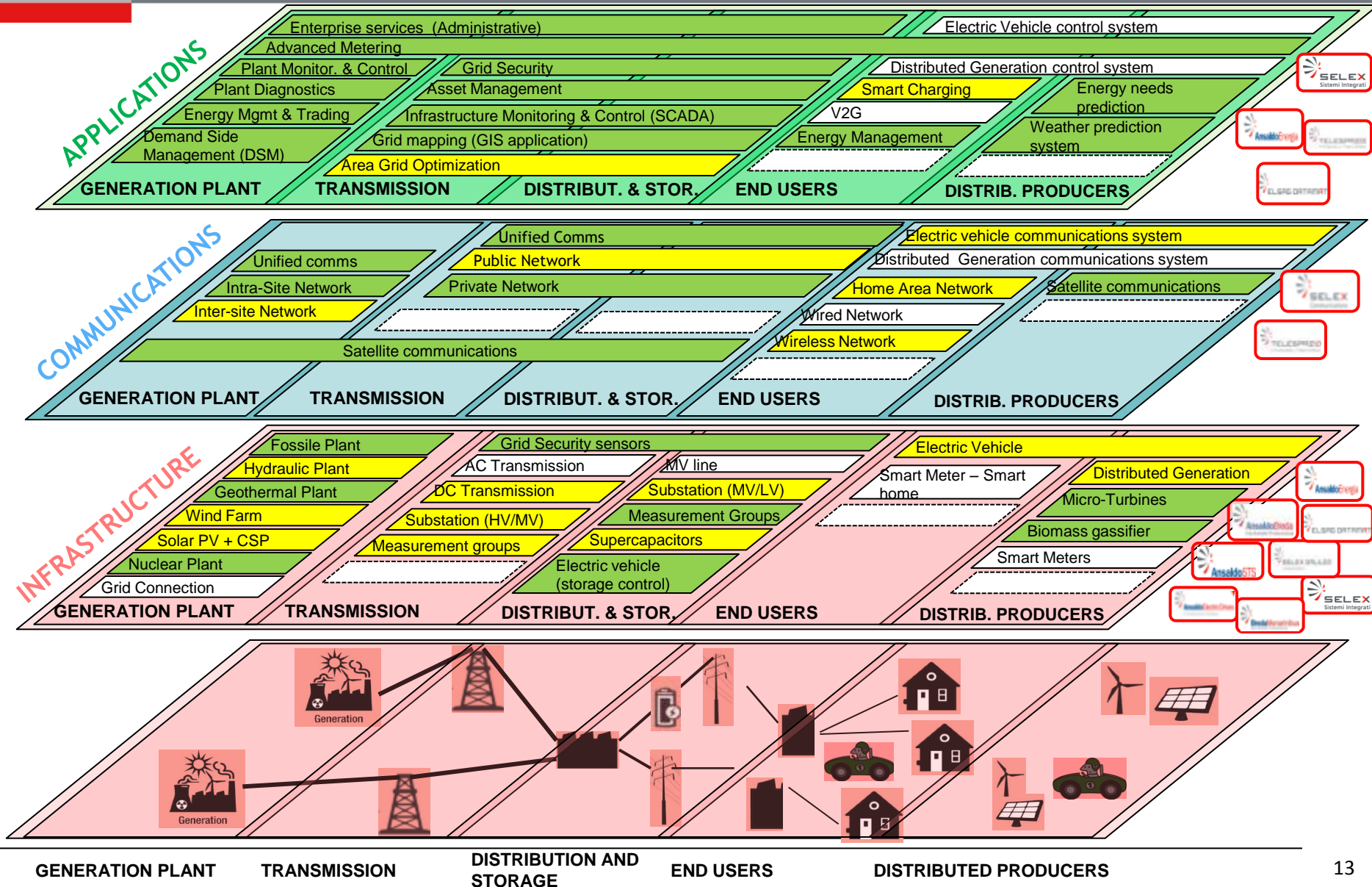
Energy Management: Smart Grids



SMART GRIDS

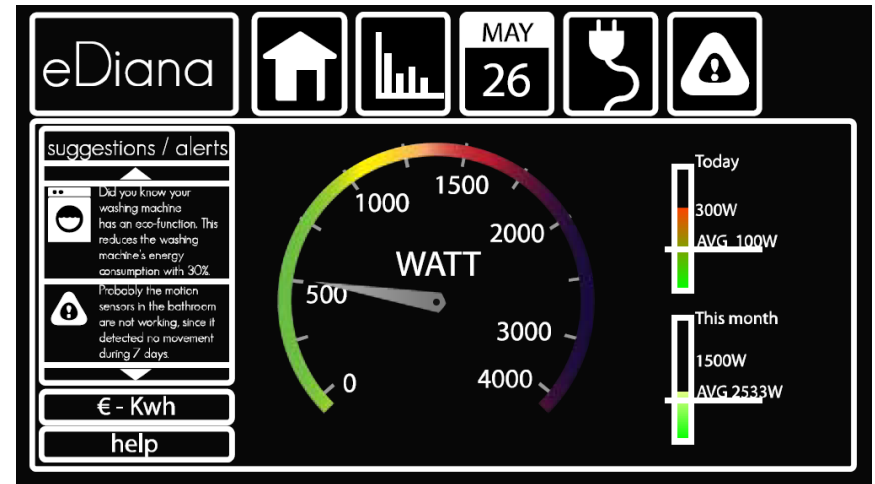
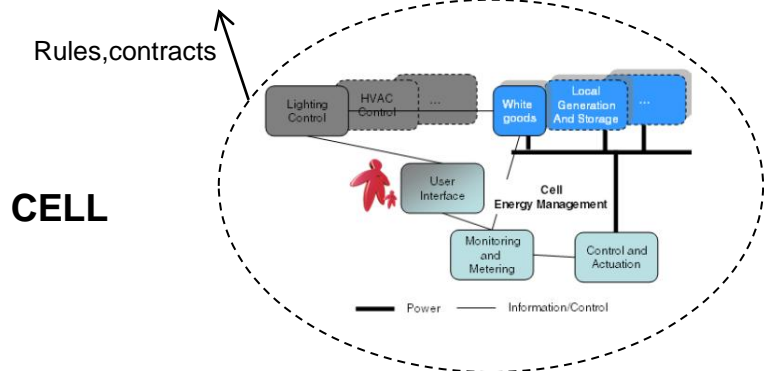
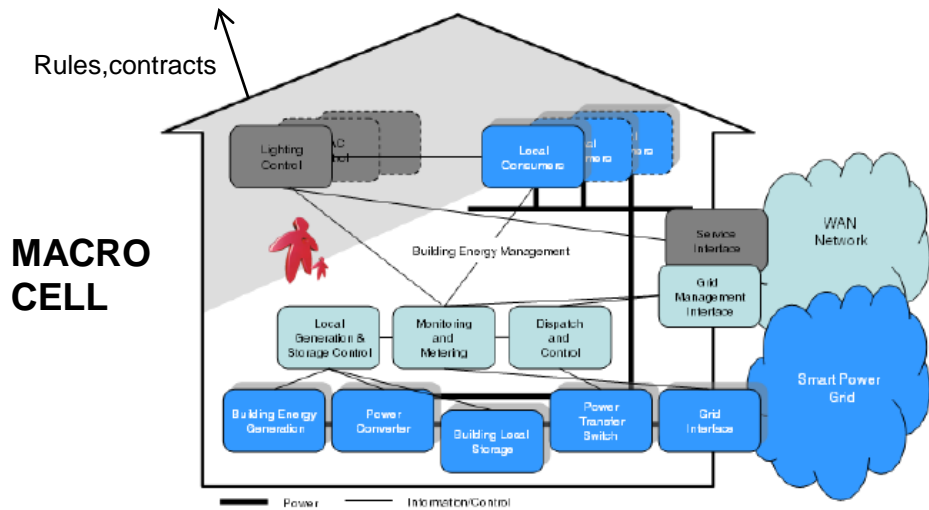
ENVIRONMENTAL SECURITY & RESPONSE

Smart Grids Taxonomy





ENERGY MARKET / ENERGY NETWORK



The CELL and MACROCELL embed a WEB service so that information can be accessed anywhere from any PC, Tablet or Smartphone

SUSTAINABLE MOBILITY

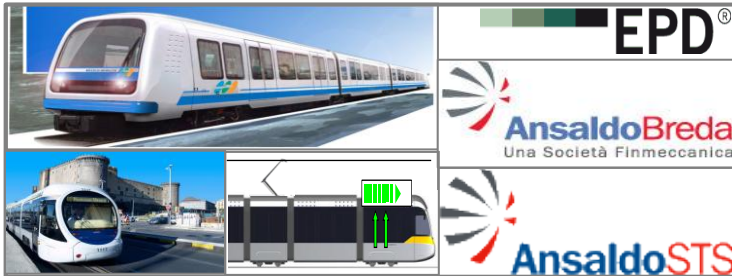
New Generation Vehicles



AIR



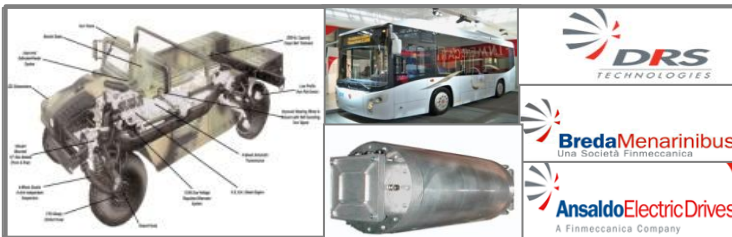
RAIL



MARITIME



ROAD



THE CHALLENGES

- REDUCE THE TRANSPORTATION INDUSTRY ENVIRONMENTAL FOOTPRINT (>20% OF CO2 EMISSIONS)
- IMPROVE VEHICLES DESIGN (weight, engines, fuels, usage)
- LIFECYCLE ANALYSIS (5-30% CO2 IMPACT IN PRODUCTION)

THE SOLUTIONS

- EU CLEAN SKY PROGRAMME: “GREEN ROTORCRAFT”, “GREEN REGIONAL AIRCRAFT” (led by AW and ALENIA AERONAUTICA)
- TILTROTOR vertical take-off aircraft (BELL-AGUSTA)
- COMPOSITE AEROSTRUCTURES (Alenia Aeronautica)
- MASS TRANSIT energy efficient turn-key stations (ASTS)
- ANSALDOBREDA ENVIRONMENTAL PRODUCT DECLARATION FOR A RAIL VEHICLE (90% OF RECYCLABLE PARTS).
- HYBRID MARITIME INSTALLATION (DRS)
- ELECTRIC VEHICLES (Ansaldo Electric Drives, Brm)

MAIN PROJECTS

- BELL-AGUSTA BA609
- BOEING 787
- ANSALDOBREDA Urban Transport - worldwide customers for Conventional Metro, Driverless Metro, Regional Railways, Light Rail Vehicles, Heavy Rail Vehicles
- BREDAMENARINIBUS – various electric & GPL city Buses

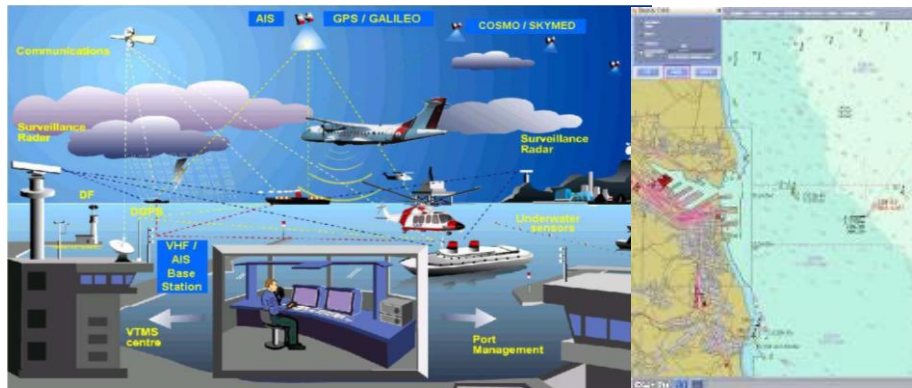
SUSTAINABLE MOBILITY

Flows optimization

AIR TRAFFIC MANAGEMENT



VESSEL TRAFFIC MANAGEMENT



RAILWAY SYSTEMS



THE CHALLENGES

- OPTIMIZE CAPACITY RESPECTING: SAFETY, SECURITY, COSTS AND MINIMIZING ENVIRONMENTAL IMPACT

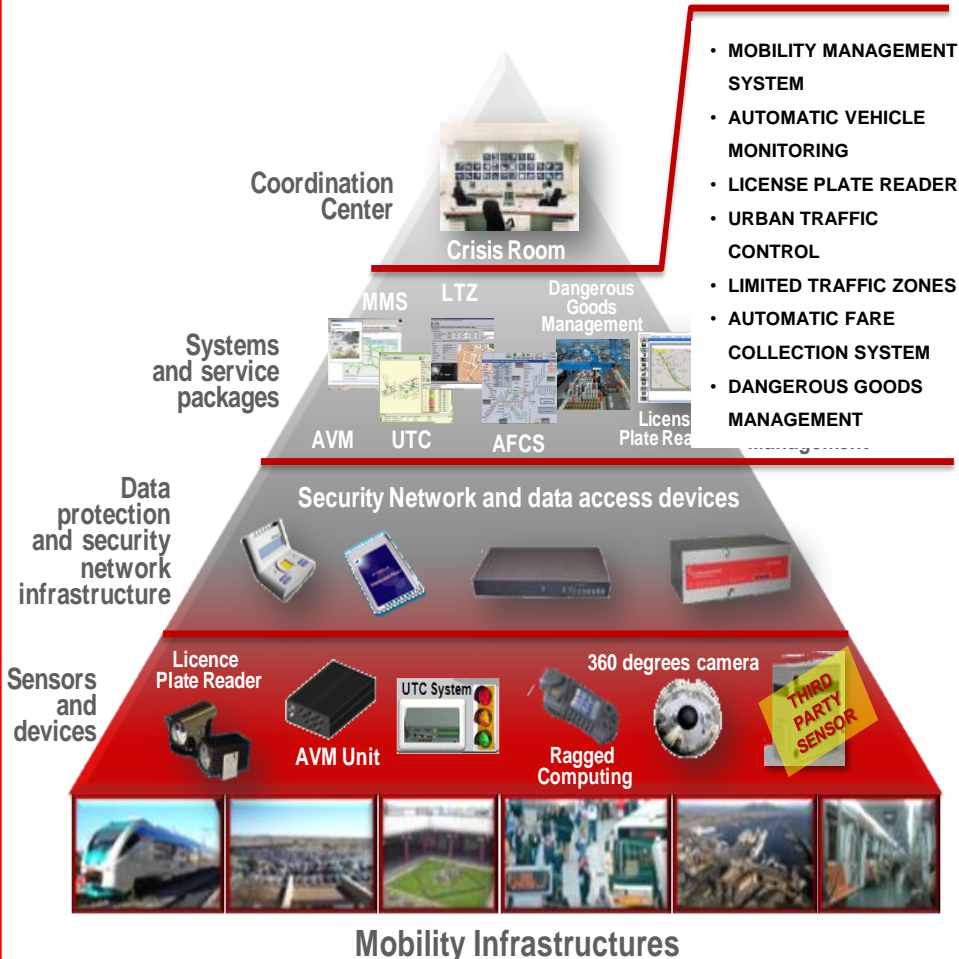
THE SOLUTIONS

- **ATM SYSTEMS:** Radars, Displays, Processors, Data Communications Systems and C2 for military and civil traffic control. SXSI is member of the **SESAR European Programme**
- **VESSEL TRAFFIC MANAGEMENT SYSTEMS:** safe and secure Maritime Operations, providing Port Authorities with intelligible complete and up-to-date information
- **RAILWAY TRAFFIC CONTROL SYSTEMS:** ensure Communications, automatic controls, failure detection and recovery, train positioning information, surveillance

MAIN PROJECTS

- ATM SYSTEMS FIELDIED IN 150 COUNTRIES (SelexSI)
- ITALIAN NATIONAL VTMS, THE LARGEST IN THE WORLD
- 50%* OF THE SIGNALLING TECHNOLOGY FOR ALL HIGH SPEED LINES WORLDWIDE (ANSALDO STS)

GROUND TRANSPORTATION



THE CHALLENGES

- SMART CITIES
- INCREASE USE OF PUBLIC TRANSPORT (<CO2/CAPITA)
- REDUCE POLLUTION/ TRAFFIC CONGESTION

THE SOLUTIONS

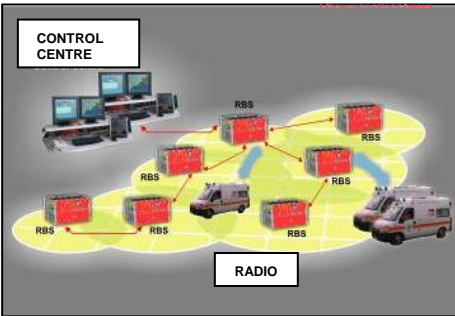
- INTEGRATED MOBILITY SYSTEM:
 - COORDINATION CENTER
 - APPLICATIONS
 - DATA PROTECTION/ SECURITY
 - SENSORS AND DEVICES

MAIN PROJECTS

- CITY OF ROME (2.7 MIO INHABITANTS) & GENOA (0,6 MIO INHABITANTS)
- MILAN ECOPASS APPLICATION (1.3 MIO INHABITANTS)
- OTHER SIGNIFICANT EXAMPLES IN SALONICA, RYIADH, EGYPT...



TELEMEDICINE & COMMUNICATION SERVICES



THE CHALLENGES

- **PRESERVE AND IMPROVE HEALTH CONDITIONS** (ORDINARY/FIRST AID, DEVELOPED/DEVELOPING COUNTRIES)
- **TO GUARANTEE EASIER ACCESS TO EDUCATION**

WATER PURIFICATION

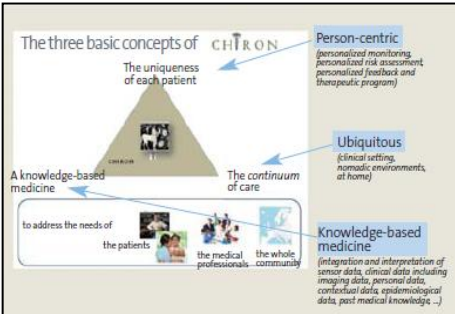
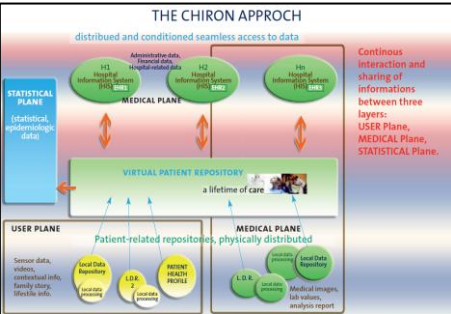


	Expeditionary Water Packaging System	Local Procurement / Transportation
Operating costs		
Fuel		
Personnel		
Convoys		
Availability	Independent operation	Dependent on supplies
Logistics safety	No transport of bottles	Risk of attacks

THE SOLUTIONS

- **FIRST AID COMMUNICATION SERVICES**
- **TELEMEDICINE SERVICES (SATELLITE COMMS)**
- **WATER PURIFICATION and BOTTLING SYSTEMS FOR FORWARD OPERATING BASES**
- **ICT FOR HEALTHCARE SERVICES**

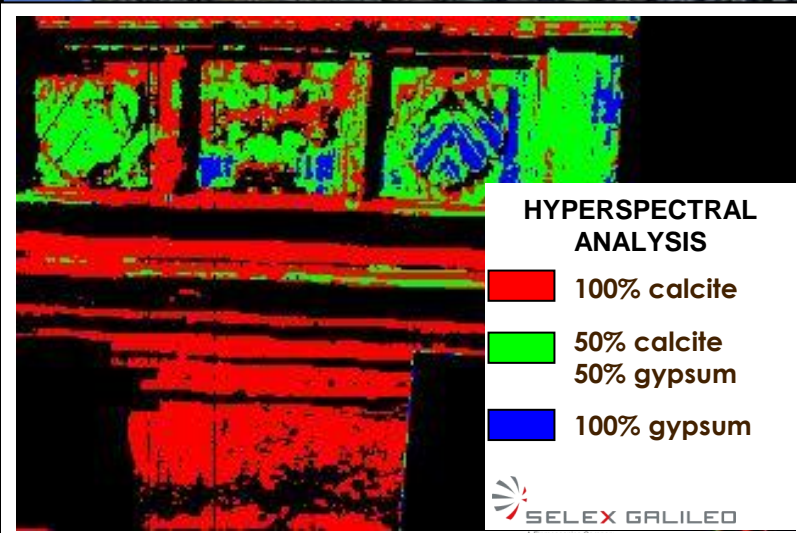
HEALTHCARE IT SERVICES



MAIN PROJECTS

- **ITALIAN NATIONAL AMBULANCE NETWORK**
- **MILITARY APPLICATIONS**
- **CONFIDENTIAL CUSTOMERS**

FLORENCE - BASILICA OF SANTA MARIA NOVELLA MARBLE DETERIORATION ASSESSMENT



HYPERSPECTRAL ANALYSIS

- 100% calcite
- 50% calcite
50% gypsum
- 100% gypsum

SELEX GALILEO





- **Città di Genova come “sistema di sistemi”**
- **Il settore tecnologico può contribuire a renderla “smart” grazie alle soluzioni di cui dispone**

- **Individuazione delle priorità**
- **Iniziative che si ripaghino anche grazie ai risparmi che generano (es sostenibilità - energia)**
- **Esplorare Modelli di servizio innovativi**
- **Coinvolgimento degli stakeholders:**
 - **Cittadinanza - Utenti**
 - **Policy Makers - incentivi**
 - **Centri di ricerca e Università**
 - **Tessuto industriale**
 - **Players tecnologici per coprire filoni prioritari**
 - **...**





Grazie

mattia.cavanna@finmeccanica.com