



Puerto de A Coruña

Autoridad Portuaria de A Coruña

Genoa, 10-11 november 2011

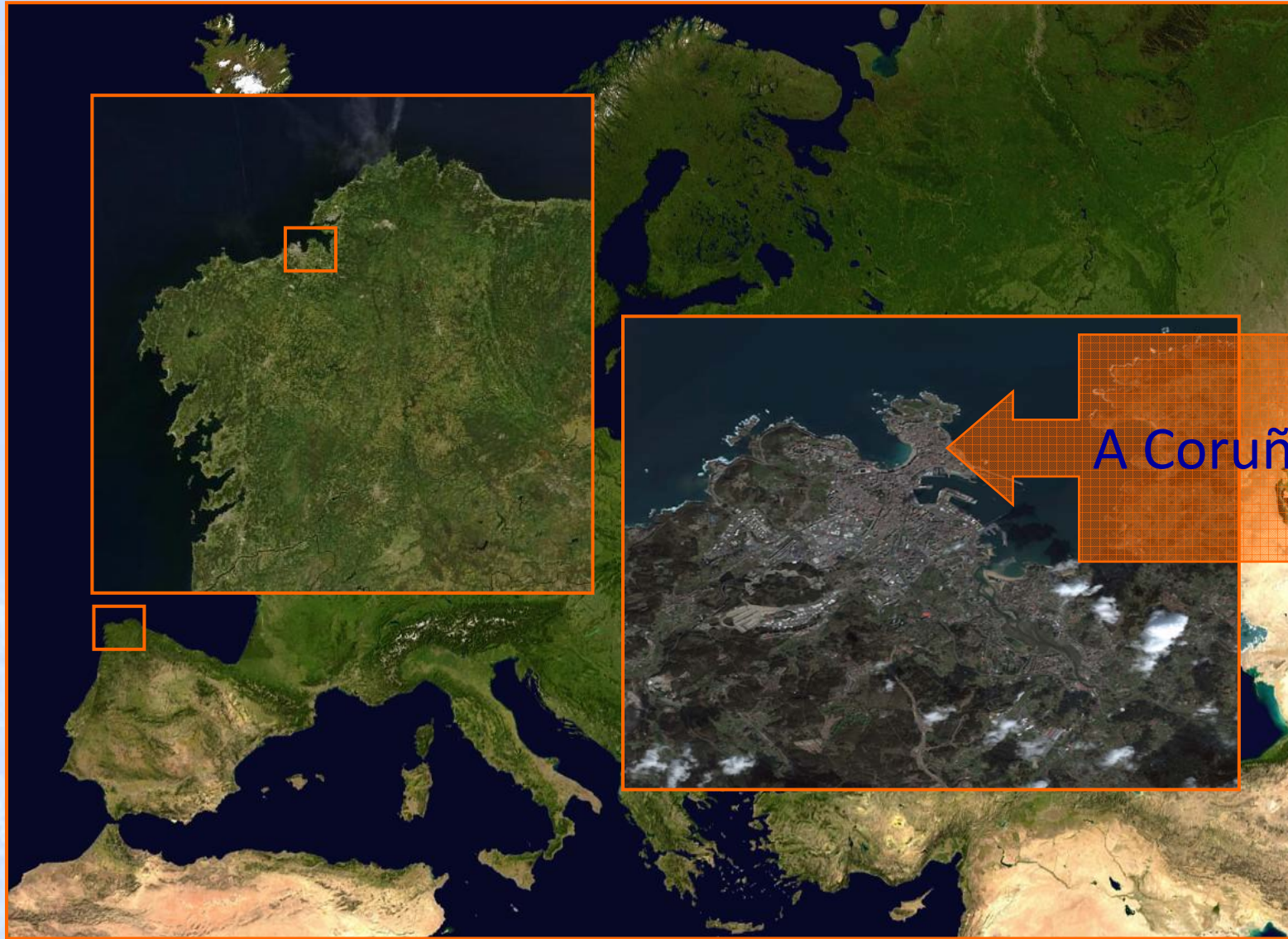
# The Outer Port of A Coruña: a need for sustainability

III International Forum on technological innovation for a competitive and sustainable development of port system and shipping.

Andrés Guerra  
Sustainability Director  
A Coruña Port Authority



# A Coruña



Puerto de A Coruña

Autoridad Portuaria de A Coruña



# A Coruña

The municipality of A Coruña has 246,056 inhabitants as of 2009, and has one of the highest population densities of Spain and Europe, with around 6,700 inhabitants per square kilometer.



Puerto de A Coruña

Autoridad Portuaria de A Coruña



# port of A Coruña



Puerto de A Coruña

Autoridad Portuaria de A Coruña



# port of A Coruña



# wikipedia: "environmental catastrophes"

La Coruña - Wikipedia, la enciclopedia libre - Windows Internet Explorer

http://es.wikipedia.org/wiki/La\_Coru%C3%B1a#Cat.C3.A1strofes\_medioambientales

Artículo **Discusión** Leer Ver fuente Ver historial

## La Coruña

Para otros usos de la palabra Coruña, véase *Coruña (desambiguación)*.

**La Coruña** (en gallego y oficialmente *A Coruña*) es una ciudad y municipio de España. Pertenece a la Comunidad Autónoma de Galicia y es la capital de la provincia homónima.

Importante puerto histórico, se sitúa en la costa noroeste de la **Península Ibérica**, en las **Rías Altas**. El centro de la ciudad se extiende sobre una península unida a tierra firme por un estrecho istmo, por lo que presenta dos fachadas marítimas distintas: la portuaria (hacia la ría de La Coruña, de aguas tranquilas) y otra de mar abierto, hacia la Ensenada del Orzán, y sobre la que se extienden las principales playas urbanas (Riazor y Orzán).

El municipio de La Coruña tiene una población de 246.056 habitantes (INE 2009),<sup>1</sup> el segundo de Galicia tras Vigo. No obstante, la ciudad, con 221.988 habitantes, constituye el núcleo urbano más poblado de Galicia.<sup>2 3</sup> Alrededor de la ciudad se ha desarrollado el área metropolitana homónima por los municipios vecinos que, junto a la cercana área metropolitana de Ferrol, forma una conurbación que aglutina a algo más de la mitad de la población total de la provincia.

La actual escasez de terreno edificable han hecho que el suelo municipal haya alcanzado un precio elevado, convirtiéndola en una ciudad de gran verticalidad. Su densidad de población es una de las más altas de España (6.680 hab/km²), ya que el término municipal cuenta con una extensión de 36,83 km².<sup>4</sup>

Una buena parte de la superficie dedicada a la actividad industrial se ha ubicado en el limítrofe municipio de **Arteijo**, uno de más industrializados de Galicia. De este modo, está centrada mayoritariamente en el sector servicios. Su sector secundario se concentra fundamentalmente en el puerto y la refinería de petróleo.

Su clima es de tipo oceánico en su variedad meridional, con temperaturas suaves todo el año.

Es sede del **Tribunal Superior de Justicia de Galicia**, de la Delegación del Gobierno en esta Comunidad y sede de la **Real Academia Gallega**<sup>5</sup> desde su fundación. Fue también capital de la **VIII Región Militar Española**, estructura territorial del ejército español ya desaparecida, aunque en la ciudad está situado el Cuartel General de la Fuerza Logística Operativa, así como una Subdelegación de Defensa.<sup>6</sup>

El municipio limita al norte con el Océano Atlántico, al este con la **Ría de La Coruña** y el municipio de **Oleiros**, al sur con el municipio de **Culleredo** y al oeste con el de **Arteijo**.

Contenido	
1 Elementos identitarios	
1.1 Topónimo	
1.2 Gentilicio	
1.3 Símbolos	
2 Geografía física y natural	
2.1 Ubicación	
2.2 Orografía y relieve	
2.3 Hidrografía	
2.4 Clima	
2.5 Flora y fauna	
2.6 Catástrofes medioambientales	
3 Historia	

Coordenadas: 43°22′17″N 8°24′19″O (mapa)

### A Coruña La Coruña

Bandera Escudo

**Puerto de A Coruña**

Autoridad Portuaria de A Coruña

**GCE** Green City Energy

**PS** PORT & SHIPPING TECH

**DNV** EMPRESA CERTIFICADA

**DNV** EMPRESA CERTIFICADA

**DNV** EMPRESA CERTIFICADA

# port of A Coruña environmental references

On October 30, 1970, the freighter Erkowit ran aground.



Puerto de A Coruña

Autoridad Portuaria de A Coruña



# port of A Coruña environmental references

On May 12, 1976, the tanker Urquiola sank.



Puerto de A Coruña

Autoridad Portuaria de A Coruña





# port of A Coruña environmental references

On December 3, 1992, the tanker Aegean Sea sank.



Puerto de A Coruña

Autoridad Portuaria de A Coruña



# port of A Coruña environmental references

On November 19, 2002, the tanker Prestige sank off the coast of Galicia.



Puerto de A Coruña

Autoridad Portuaria de A Coruña



# port of A Coruña environmental references

On June 20, 2005, the ship Rosalia D'Amato ran aground .



Puerto de A Coruña

Autoridad Portuaria de A Coruña



# port of A Coruña environmental references

## Coal stockyard "La Medusa"



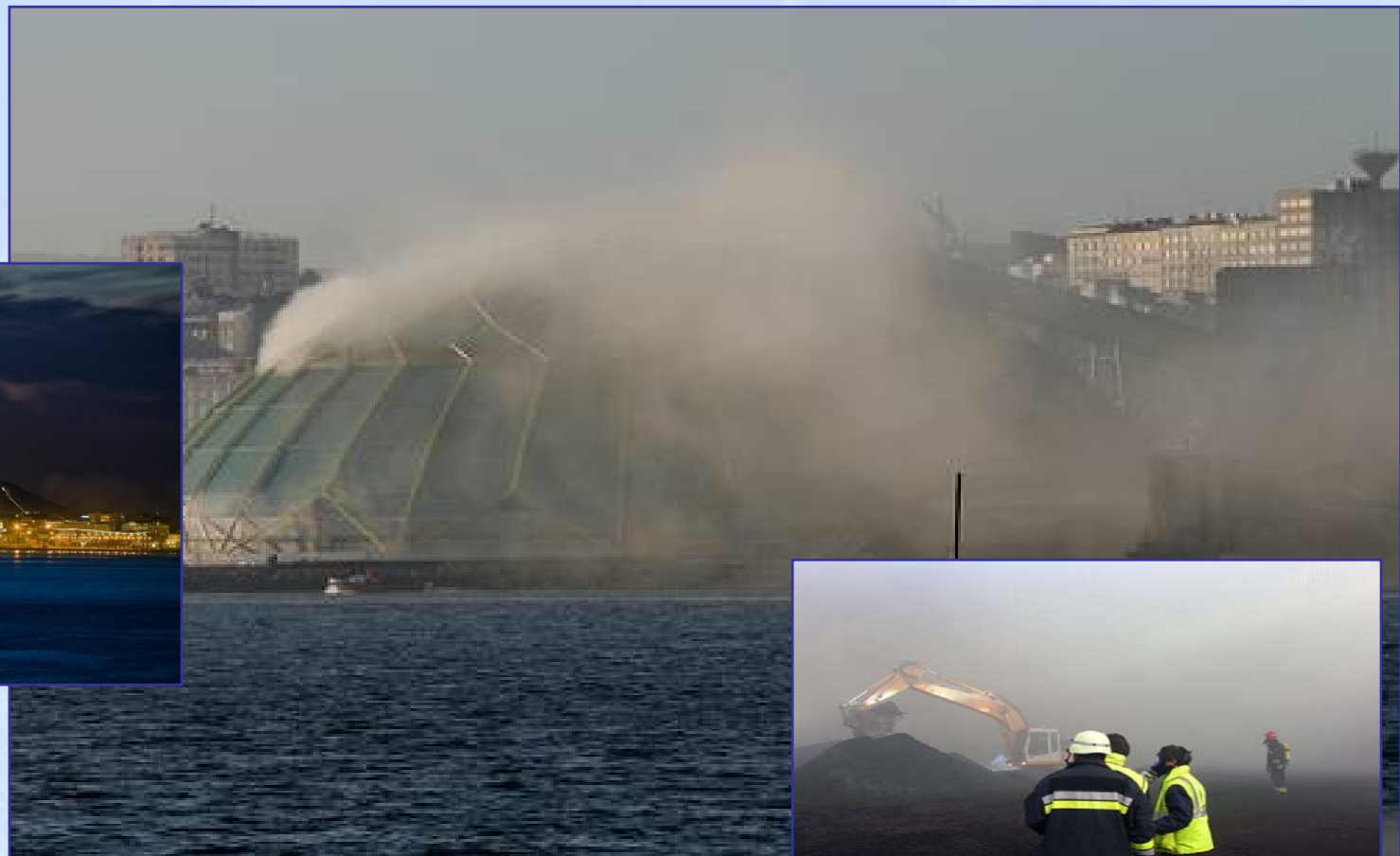
Puerto de A Coruña

Autoridad Portuaria de A Coruña



# port of A Coruña environmental references

on March 13, 2007 burned inside of the "Medusa" 40,000 tons of coal.



Puerto de A Coruña

Autoridad Portuaria de A Coruña



# port of A Coruña environmental references

... besides, there is a pipeline beneath the city and the port can't growth ...



REPSOL burner chimney



Puerto de A Coruña

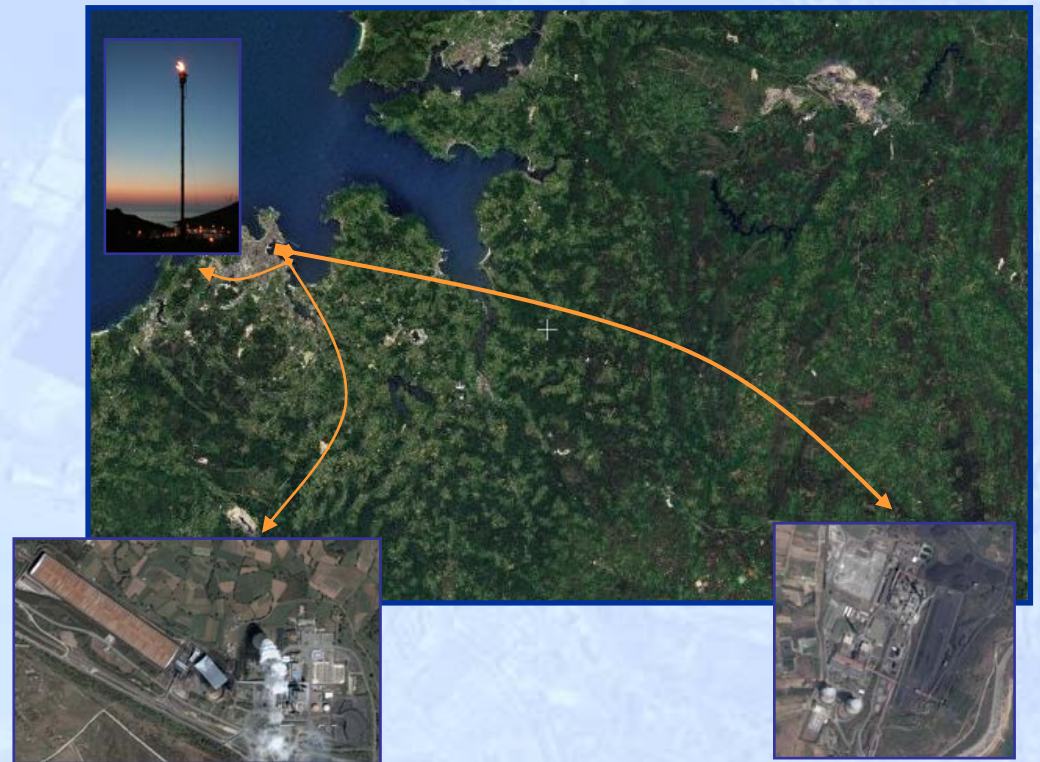
Autoridad Portuaria de A Coruña



# the dilemma

... It was necessary to move away from A Coruña trades which generate some unacceptable environmental and safety risks ...

... but we should continue carrying crude to the REPSOL refinery (120,000 barrels/day), moving coal to power plants in Meirama (563 MW) and Ponferrada (1341 MW) and feeding livestock in Galicia ...



# the solution

The dilemma was resolved in 2005 and it was initiated the construction of the outer harbour of A Coruña in Punta Langosteira (<http://www.puertodelatlantico.com>) around 9 Km west of the city of A Coruña and 4 Km away to the REPSOL refinery in Bens.

The objectives of this project, as established by the European Commission in its decision regarding the concession of a grant from the cohesion funds, are the following:

- To distance the city from highly dangerous port traffic or traffic with strong environmental impact (such as petrol products, coal or other food in bulk products) and remove the pipeline which goes through a significant part of A Coruña's subsoil.
- To resolve the conflict Port-City given the location of the current port in the centre of the city and to increase the current port space, clearly insufficient, involving the industrial development of the port environment.



# ... but, why there ...

## environmental strategic assessment

Punta Langosteira

Ría de Ferrol: cabo prioriño chico

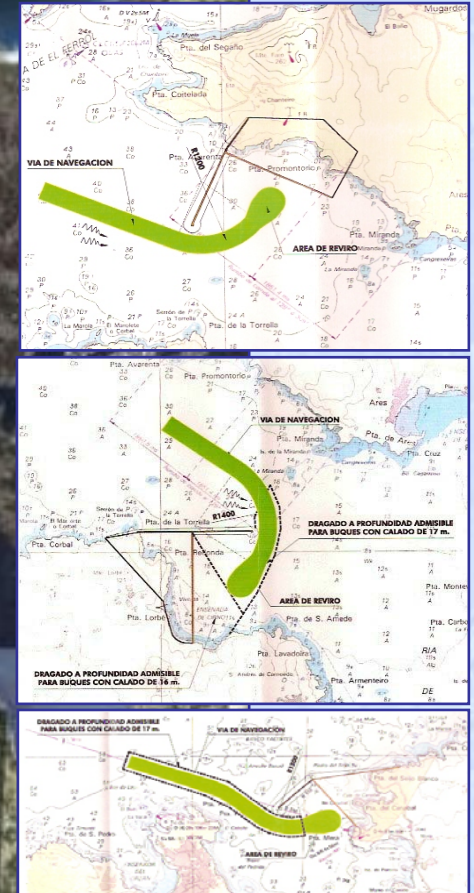
Ría de Betanzos: Punta Avarenta

Ría de Betanzos: Punta Redonda

Ría de A Coruña: Punta Canabal

Ría de A Coruña: banco de Yacentes

Ensenada de Bens

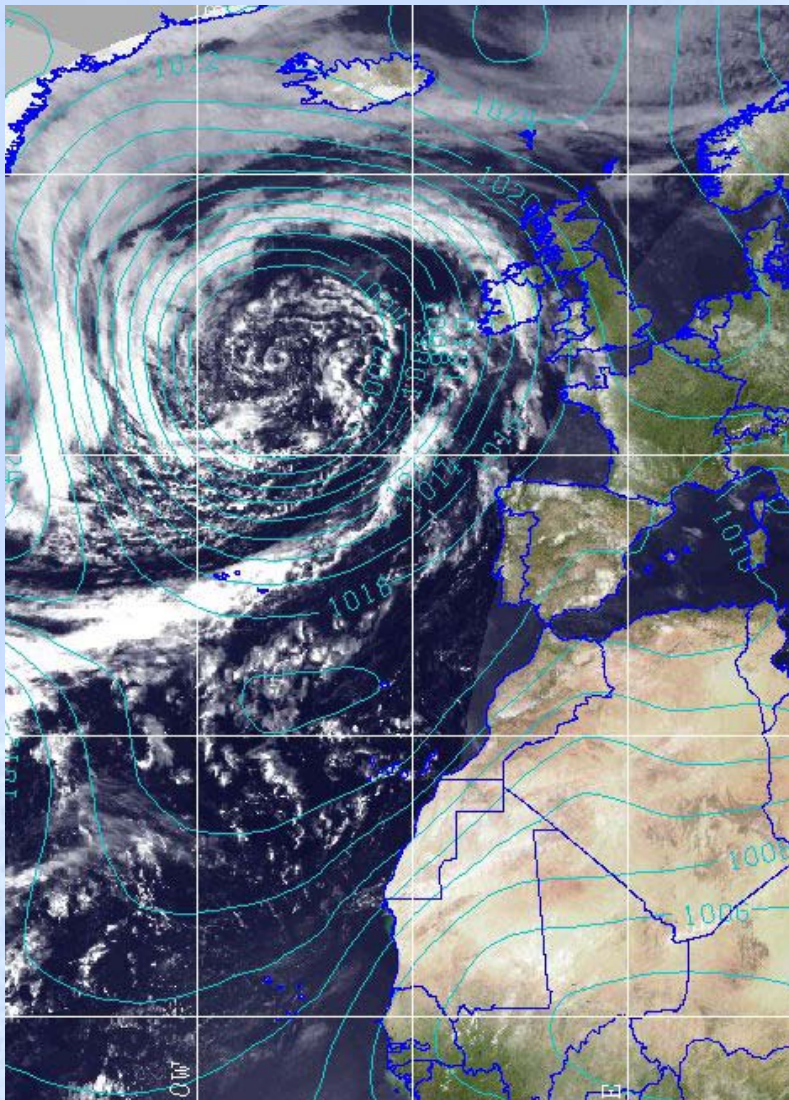


Puerto de A Coruña

Autoridad Portuaria de A Coruña



# ... in costa da morte?



# the project

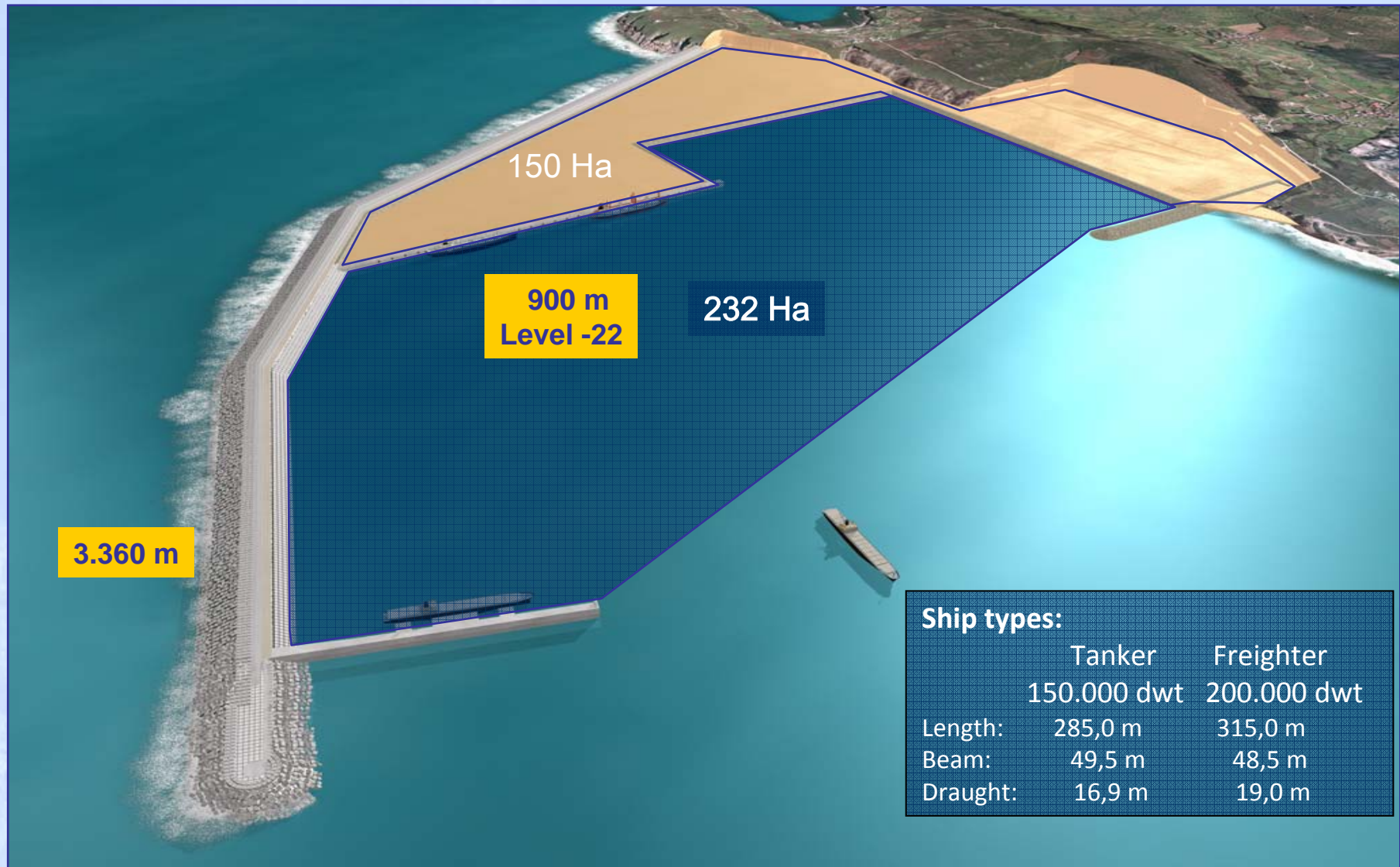


Puerto de A Coruña

Autoridad Portuaria de A Coruña



# some areas and depths



Puerto de A Coruña

Autoridad Portuaria de A Coruña





# materials

quarry material:

32.400.000 m<sup>3</sup>

concrete:

3.484.000 m<sup>3</sup>

blocks

2.877.000 m<sup>3</sup>

blocks 15 t

121.365 ud.

blocks 50 t

13.171 ud.

blocks 52 t

4.246 ud.

blocks 70 t

7.639 ud.

blocks 90 t

2.033 ud.

**blocks 150 t**

**22.251 ud**

blocks 178 t

194 ud.

blocks 195 t

288 ud.

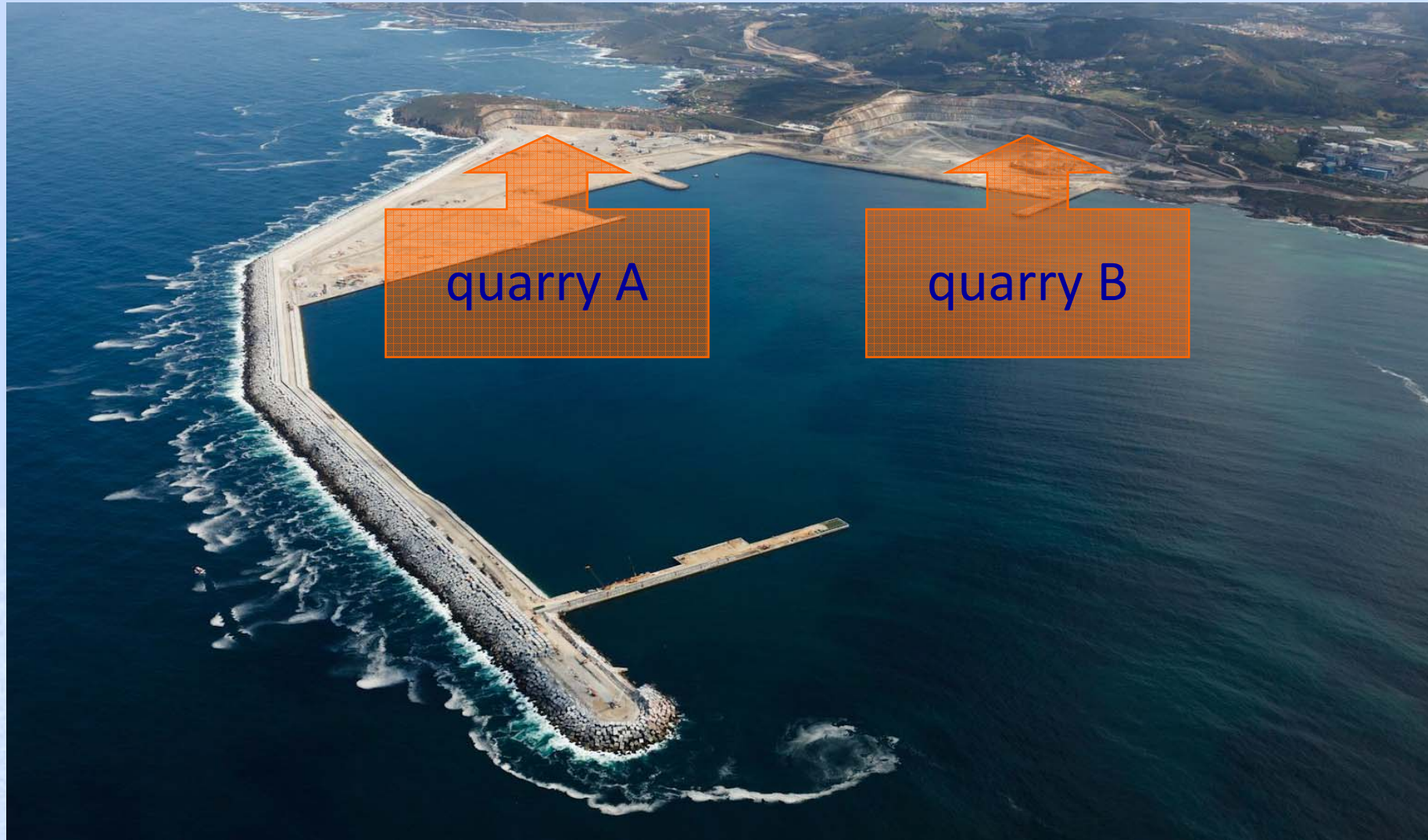


Puerto de A Coruña

Autoridad Portuaria de A Coruña



# quarries: they made it possible ...



Puerto de A Coruña

Autoridad Portuaria de A Coruña



# Il giorno degli innocenti

On december, 28, this year, the A Coruña port Authority will receive the 1st. and 2nd. phases of the new outer port ... the innocent's day ...

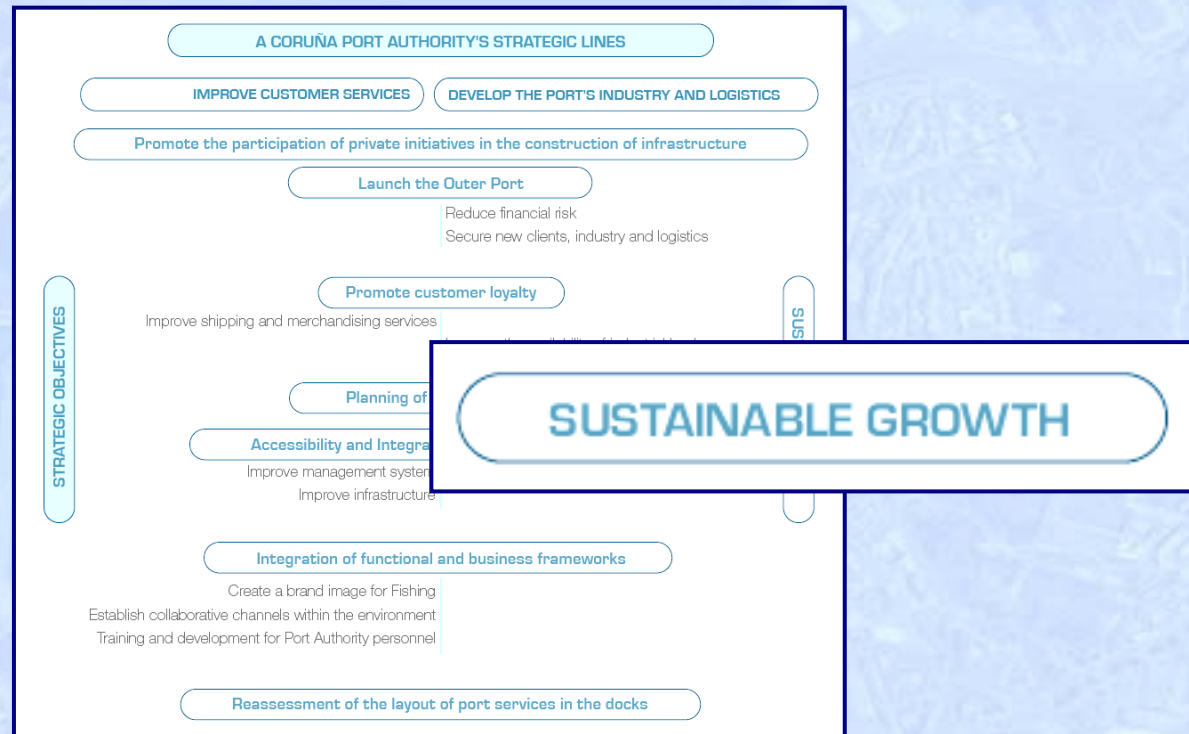
... in few months we will move the cargo from the inner to the outer port, but we have to “move” our mind as well ...





# moving to sustainability

Besides the construction of a new port, it was essential changing the strategic and management approach to the port business in A Coruña. In the strategic plan 2009-2013 was introduced a new line: "sustainable growth" which affected every strategic objective.



# strategic plan for Corporate Social Responsibility

In order to develop the strategic line of sustainable growth affecting all strategic goals, the Port Authority of A Coruña has developed a strategic plan for corporate social responsibility with the following objectives:

- Internalizing the concerns of our stakeholders,
- Promoting the welfare of the workers,
- Creating social value,
- A technical commitment in environmental operations, control and management,
- Safety in the transport of goods,
- Eco-Efficiency and innovation,
- Concern for climate change.



<http://cma.puertocoruna.com>

# moving to sustainability: some examples

As a result of the new strategy, the outer port development will take into account:

- Eco-efficiency initiatives
- Sustainable mobility plans to get to and within the outer port
- Environmental criteria in port operators licences and land lease contracts
- Social criteria (initiatives for the promotion of employment for disabled people, and to prevent gender inequality) in port operators licences and land lease contracts
- use of renewables energies (sound technologies) etc.



Puerto de A Coruña

Autoridad Portuaria de A Coruña



# eco-efficiency strategic plan: some points ...

## Energy savings in buildings.

The port Authority has taken into account the recommendations from the Directive 2002/91/EC on the energy performance of buildings. As a consequence the temperature in the buildings and public spaces in the port area may not fall below 26° in summer or be above 21° in winter. Besides, the port Authority will require the Energy performance certificates in all the office buildings.

## Measures for saving electricity in the port area.

In the outer port will be not allowed low efficiency bulbs. In the streets we will use leds lightning. In esplanades we will use High Pressure Sodium Lamps.

As regards public lighting, the energy efficiency of outdoor lighting systems will be improved through electricity usage monitors and regulators.

## Waste management

The port Authority will promote plans for reduce, reuse and recycle the wastes for both port and MARPOL 73/78 wastes. In the inner port we **have reached a 63% reusing rate.**

# mobility strategic plan: some points ...

Some public transport initiatives from A Coruña to the outer port will be adopted as well as “car sharing” projects. In addition, a pilot project promoting the use of electric vehicles within the port will be launched.

It will be established a preference criterion for cars with an energy class “A” rating in port Authority public procurement procedures.

To promote energy-efficient driving and safety, a proposal will be put forward on reducing speed limits in the port area.

Also, if it is possible, urban bike lanes will be constructed to get to and within the port.



# A Coruña outer port: november 2011



Puerto de A Coruña

Autoridad Portuaria de A Coruña







**Puerto de A Coruña**

Autoridad Portuaria de A Coruña

A Coruña port Authority is a registered Organizational Stakeholder of the Global Reporting Initiative (GRI) and support the mission of the GRI to develop globally accepted sustainability reporting guidelines through a global, multi-stakeholder process.

